

Flanges, Flange Adaptor, DIN PN10/16 BS 4504

- Flansche, Flansch Adapter, DIN PN10/16
- Brides rainurées DIN PN 10/16 BS 4504

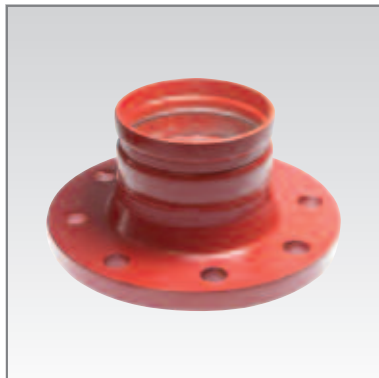
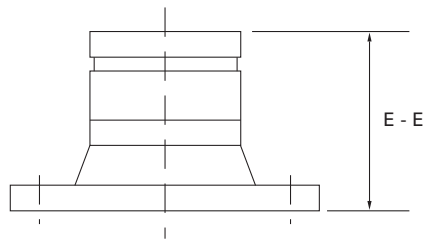


FIG. 343 & 344



Art. Nr.	Nominal Size Nenngröße Dimensions nominales	Pipe OD Rohr Tube	E - E	Mating Flange Bolt Size Flansch Bolzen-Größe Boulons contre bride	Approx Weight Gewicht (Ca.) Poids approx.
	mm ["]	mm	mm	mm ["]	Kg
343F00060*	50 [2]	60.3	95.0	M16 x 65	2.3
343F00076*	65 [2.1/2]	76.1	95.0	M16 x 65	3.3
343F00089*	80 [3]	88.9	100.0	M16 x 70	4.0
343F00108*	100 [4]	108.0	102.0	M16 x 70	4.5
343F00114*	100 [4]	114.3	102.0	M16 x 70	4.6
343F00133*	125 [5]	133.0	105.0	M16 x 75	5.9
343F00139*	125 [5]	139.7	105.0	M16 x 75	6.0
343F00159*	125 [5]	159.0	105.0	M16 x 75	7.1
343F00165*	150 [6]	165.1	105.0	M20 x 80	7.2
343F00168*	150 [6]	168.3	105.0	M20 x 80	7.2
343F00219*	200 PN16 [8]	219.1	112.0	M20 x 90	10.2
343F00273*	250 PN16 [10]	273.0	138.0	M24 x 100	18.0
343F00324*	300 PN16 [12]	323.9	138.0	M24 x 100	22.4

* = 1 for painted RAL3000 finish, 2 for hot dipped galvanized finish

* = 1 für lackierte Ausführung RAL3000, 2 für feuerverzinkte Ausführung

* = 1 pour finition peinture RAL3000, 2 pour finition galvanisée à chaud

Flange Adaptor, DIN PN10 BS 4504

- Flansche, Flansch Adapter, DIN PN10
- Brides rainurées DIN PN 10 BS 4504

Art. Nr.	Nominal Size Nenngröße Dimensions nominales	Pipe OD Rohr Tube	E - E	Mating Flange Bolt Size Flansch Bolzen-Größe Boulons contre bride	Approx Weight Gewicht (Ca.) Poids approx.
	mm ["]	mm	mm	mm ["]	Kg
344F00219*	200 PN10 [8]	219.1	112.0	M20 x 80	10.2
344F00273*	250 PN10 [10]	273.0	138.0	M20 x 90	18.0
344F00324*	300 PN10 [12]	323.9	138.0	M20 x 90	22.4

* = 1 for painted RAL3000 finish, 2 for hot dipped galvanized finish

* = 1 für lackierte Ausführung RAL3000, 2 für feuerverzinkte Ausführung

* = 1 pour finition peinture RAL3000, 2 pour finition galvanisée à chaud